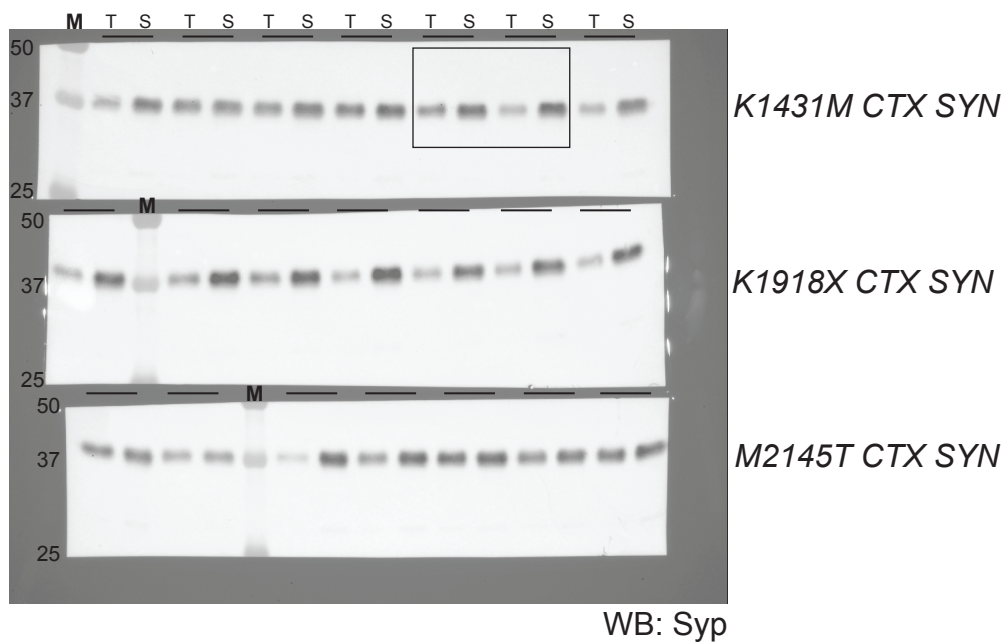
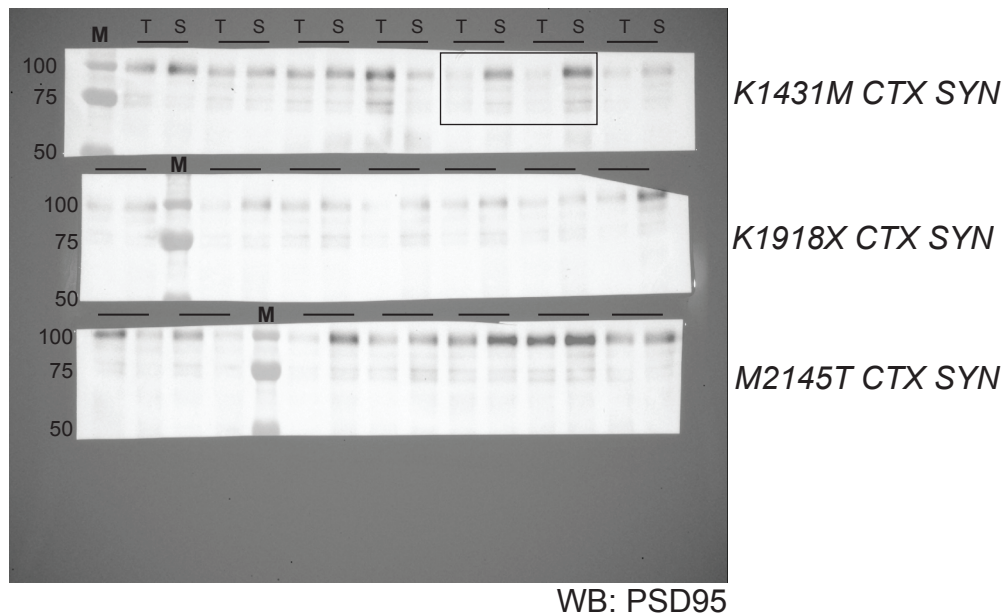


**Figure 1-figure supplement 1-source data 4.** Original membranes corresponding to Figure 1-figure supplement 1, Panel M.

15  $\mu$ g cortical brain homogenate (T) and corresponding crude synaptosome preps (S) from P39-P42 mice were separated by gel electrophoresis and stained by Ponceau S. Lines denote total homogenate-synaptosome pairs. Stained membranes were cut prior to blotting with an anti-Trio SR5-6 antibody (bottom right). M: Bio-Rad Protein Plus All Blue Protein Standard. Boxes indicates cropped images used in final figure.



1.5  $\mu$ g cortical brain homogenate (T) and corresponding crude synaptosome preps (S) from P39-P42 mice were separated by gel electrophoresis; lines denote total homogenate-synaptosome pairs. Samples were loaded in the same order as in Trio blots on prior page. Ponceau-stained membranes were cut prior to immunoblotting for PSD95 (top) and synaptophysin (bottom). Boxes indicates cropped images used in final figure.